

K-STATE
Research and Extension



Phillips Rooks
District



FEBRUARY 2025 4-H NEWSLETTER

TEAM:

Anna Muir, Director

Rachael Brooke, Agent

Cody Miller, Agent

Cindy Walker, Agent

Kristin Nash, Office Professional


Jenny Reichard, Office Professional

**4-H MOTTO -
TO MAKE THE BEST
BETTER.**

784 Sixth Street
Phillipsburg, KS 67661
785-543-6845

115 N. Walnut St.
Stockton, KS 67669
785-425-6851

K-State Research and Extension is an equal opportunity provider and employer.



STATE 4-H NEWS

COMMUNICATIONS RESOURCES

As you begin to prepare for County 4-H Club Day remember to check out the great resources for project talks, illustrated talks, demonstrations, and public speaking on the 4-H Communications Project Page—[Communications | Personal Development | Projects | Kansas 4-H Youth Development](#)

INTERIOR DESIGN & ARCHITECTURE PROJECT MEETINGS

A complete revision with new project materials and state fair classes that better align with design thought processes and learning activities. Plan to join the virtual project meetings on February 12 at 7:00 p.m. Join here—<https://ksu.zoom.us/j/92487680063> and March 12 at 7:00 p.m. Join here—<https://ksu.zoom.us/j/98394057717> In person project experiences will be held April 12 at K-State Open House; Interior Architecture Department in Seaton Hall and at 4-H Discovery Days.

4-H HORSE PANORAMA

February 22-23 at Rock Springs Ranch. Members can participate in horse quiz bowl, hippology, presentations, and more. A first-timers opportunity will be provided for youth to explore hippology.

STATE 4-H SCHOLARSHIPS and VANIER FAMILY SCHOLARSHIP

Due March 1. The Kansas 4-H Scholarship and Vanier Family Scholarship application process is now open. Scholarships are available to current high school seniors and undergraduate students. There are several scholarships that graduate and professional students are eligible for. For more information about the application process and to apply follow this link [Scholarships | Awards and Recognition | Resources | Kansas 4-H Youth Development](#)

STATE HORSE JUDGING CONTEST

March 21 at the Saline County Expo Center. 4-H members age 9-18 are invited to compete in the State 4-H Horse Judging Contest and the Open Horse Judging Contest. An open novice (non-reasons) division is also available for youth age 7-18 sponsored by the KQHA. Registration is open at the [EquiFest of Kansas website](#) and is due March 7. Complete 4-H division information and rules are available at <https://www.kansas4-h.org/events-activities/contests/horse-judging/index.html>

COOL CAREERS 4-H VIDEO CONTEST

This competition allows 4-H members to learn about a career and then produce a video to create their own episode of the series [Cool Careers](#). 4-H members will select a profession within one of the 4-H projects in which they are enrolled for the current year. 4-H members will film, edit and publish an original video (4-10 minutes in length) about a professional working in this field and their career. These videos should be geared towards a youth 4th-8th grade audience to inspire and introduce them to the exciting opportunities in the selected field of work.

LOCAL 4-H NEWS

UPCOMING MEETINGS

Phillips County 4-H Council—February 24 at 7:00 p.m. at the Phillips County Annex Meeting Room
Rooks County 4-H Livestock Committee—February 10 at 6:30 p.m. at the 4-H Building
4-H Junior Leaders—February 10 at 7:30 p.m. at the 4-H Building
Rooks County 4-H Council — March 10 at 7:30 p.m. at the 4-H Building

SHOOTING SPORTS

Practices will be held from 2:00-4:00 p.m. at the Rooks County Fairgrounds, 4-H Building on the following dates—February 2, 9, 16, and 23, and March 2, 9, 16, 23, and 30.
Members wanting to participate must be enrolled in 4-H. Enroll here: [Sign In \(4honline.com\)](http://4honline.com)

YOUTH FOR THE QUALITY CARE OF ANIMALS (YQCA)

Required for youth planning to sell livestock in the Rooks County Free Fair 4-H/FFA Livestock Sale, livestock exhibitors at the Kansas State Fair and Kansas Junior Livestock Show. Trainings will be available on March 10 at 6:00 p.m. at the Rooks County Fairgrounds, 4-H Building, March 31 at 5:30 pm. at the Phillips County Annex Meeting Room, and April 14 at the Rooks County Fairgrounds, 4-H Building. All livestock must be tagged and turned into the Phillips-Rooks Extension District by May 1 to be eligible for the Phillips County Fair and Rooks County Free Fair.

COUNTY 4-H CLUB DAY

Youth can participate in Project Talks, Public Speaking, Extemporaneous Speaking, Demonstrations, Illustrated Talks, Model Meetings, Vocal Ensemble, Vocal Chorus, Instrumental Ensemble, Band/Orchestra, Vocal Solo, Instrumental Solo, Dance, Square Dance, Other Dance, Reading, Skit/Creative Dramatics, and Other Talent. Those selected as top blue at County 4-H Club Day will advance to Regional 4-H Club Day.

Guidelines can be found here: [Phillips County 4-H - Wakelet](#) and [Rooks County 4-H - Wakelet](#)

Phillips County—March 24 at 5:00 p.m. at Phillipsburg Middle School, please register by March 7 at noon.

Rooks County—March 24 at 5:00 p.m. at the Stockton High School, please register by calling the Phillips-Rooks District Extension Office by March 14.

ASSISTANTS TO FAIR SUPERINTENDENTS

Any 4-Her interested in being an Assistant to the Superintendents at the Fair please call the Phillips-Rooks District Extension Offices and specify which division you would be interested in by March 15.



LOCAL 4-H NEWS

PHILLIPS COUNTY GUN SHOW FOOD STAND

Phillips County Fair Building. Club work schedules are as follows (each club needs four 4-Hers and three adults to work):

Saturday, February 8

7:00 a.m.—11:00 a.m. Deer Creek

11:00 a.m.—2:30 p.m. Lone Prairie

2:30 p.m.—close Agra Trailblazers

Sunday, February 9

8:30 a.m.—12:30 p.m. Iowa Union

12:30 p.m.—close Sunnyside



Each club must provide 5 pies (uncut, nine inch).

Please send a list of workers and those donating pies to the Phillips-Rooks Extension District by February 3. Members that have volunteered for the Gun Show Food Stand Committee will be cooking on February 5 at 3:30 p.m.

PHILLIPS COUNTY 4-H EVENT SCHOLARSHIPS

The Phillips County 4-H Council will provide scholarships to members attending events. \$200 for state events and \$300 for national events. The scholarship application can be found here: <https://wakelet.com/wake/74cEuoNhURuinlF84b0dF>

PHILLIPS COUNTY 4-H EVENT SCHOLARSHIP JAKE & LUCILLE JONES

Through the Phillips County Community Foundation a 4-H event scholarship is available to 4-Hers that are wanting to attend Rock Springs Ranch. The scholarship will pay \$315 towards camp registration fees and will be paid directly to Rock Springs Ranch prior to the 4-Her attending camp. The scholarship application can be found here: <https://wakelet.com/wake/74cEuoNhURuinlF84b0dF>

PHILLIPS COUNTY FAIR PREMIUM REQUIREMENTS

The Phillips County Fair Board implements the following in order for members to receive money for exhibiting at the Phillips County Fair as well as selling an animal in the Phillips County 4-H/FFA Livestock Premium Sale.

- 1) Members must attend three 4-H Club meetings from roll call to adjournment.
- 2) Members must work in the Fair Food Stand.
- 3) Members must also meet one of the following requirements:
 - attend 4-H Sunday,
 - participate in the county sponsored fundraiser,
 - participate in County 4-H Club Day,
 - and/or participate in a 4-H leadership activity such as a camp counselor, daycamp, babysitting clinic, etc.



2025 K-State Junior Swine Producer Day



Join us on Saturday, March 1, 2025 for the biennial K-State Junior Swine Producer Day at the Stanley Stout Center in Manhattan. This educational event will be a fun-filled day in which youth, parents, agents, ag teachers, and swine project leaders can increase their knowledge of youth swine projects. Presentations will be provided by K-State faculty members, graduate students, former exhibitors, and guest speakers. All ages and skill levels are invited! Participants will receive a K-State Show Pig Guide, t-shirt, and complimentary lunch. Only those who register by February 5 will receive a t-shirt. The registration fee is \$20/person for those who sign up by the registration deadline, or \$25/person after that date. Registration is limited to 400 attendees, on a first come, first served basis. This is a family event! Anyone attending must register, including all youth and adults.

March 1



Tentative Schedule

- 8:00AM Registration Opens
- 9:00AM Welcome
- 9:15AM Project Selection
- 10:00AM Breakout Sessions
 - Nutrition, Meats, Facilities & Equipment, Breeds & Ear Notching
- 12:00PM Lunch
- 12:45PM Health
- 1:30PM Breakout Sessions
 - Showmanship, Daily Care & Clipping, Show Day Prep, Resources
- 3:00PM Wrap-up
- 3:30PM YQCA Training (optional)



Registration

- ✔ \$20/person by February 5
- ✔ \$25/person after February 5
- ✔ Late registrants will not receive a t-shirt.
- ✔ All attendees must register, including youth, parents, and adults.
- ✔ No refunds.
- ✔ Attendance is limited to the first 400 participants to register.



Questions?

Joel DeRouchey
jderouch@ksu.edu
785.532.2280

Lexie Hayes
adhayes@ksu.edu
785.532.1264

Register By February 5

Limited Attendance



Location

Stanley Stout Center



Register Online

<https://commerce.cashnet.com/KSUASIND>

K-State, County Extension Councils, Extension Districts, and U.S. Department of Agriculture Cooperating. All educational programs and materials available without discrimination on the basis of race, color, religion, national origin, sex, age, or disability.

K-State Research and Extension and the Department of Animal Sciences & Industry, or their assignees, reserve the right to photograph, record the image and/or voice of participants for future research, educational, or promotional purposes. By attending, you provide consent to the above items and waive all rights to claims for payment or royalties in connection with any use of said images or recordings, unless you notify event organizers you withhold consent, in writing, prior to the event.



Scan Me!

K-State Junior MEAT GOAT PRODUCER DAY

3.22.25

Event

Join us on Saturday, March 22, 2025 for the biennial K-State Junior Meat Goat Producer Day at the Stanley Stout Center north of the K-State campus in Manhattan. This educational program will be a fun-filled day in which youth, parents, agents, ag teachers, project leaders, and volunteers can increase their knowledge of youth meat goat projects. Presentations will be provided by K-State faculty members, graduate students, former exhibitors, and guest speakers. All ages and skill levels are invited! Participants will receive a K-State Meat Goat Show Guide, t-shirt, and complimentary lunch. Only those who register by the deadline on February 26 will receive a t-shirt. The registration fee is \$20/person before February 26 and \$25/person after the deadline. This is a family event! Anyone attending must register, including all youth, parents, and adults. Registration is limited to 400 participants, filled on a first come, first serve basis.

K-State, County Extension Councils, Extension Districts, and U.S. Department of Agriculture Cooperating. All educational programs and materials available without discrimination on the basis of race, color, religion, national origin, sex, age, or disability.

Tentative Program

Friday, March 21
5:00-7:00PM *Optional Tour*
Sheep & Meat Goat Center

Saturday, March 22
8:00AM Check-in
9:00AM Welcome
9:15AM Selection
10:00AM Breakout Sessions
-Nutrition
-Facilities & Equipment
-Doe Management & Kidding
11:15AM Health & Wellness
12:00PM Lunch
1:00PM Breakout Sessions
-Showmanship
-Reproduction
-Clipping & Grooming
3:15PM Wrap-up
3:30PM YQCA Training (*optional*)
4:00-6:00PM *Optional Tour*
Sheep & Meat Goat Center

Registration

- 📌 \$20/person by February 26
- 📌 \$25/person after February 26
- 📌 Late registrants will not receive a t-shirt.
- 📌 All attendees must register, including youth, parents, & adults.
- 📌 No refunds
- 📌 Attendance is limited to the first 400 participants to register.



Scan me!

Questions?

Lexie Hayes
adhayes@ksu.edu
785.532.1264

Register Online

[https://commerce.cashnet.com /
KSUASIND](https://commerce.cashnet.com/KSUASIND)

By
February 26

K-State Research and Extension and the Department of Animal Sciences & Industry, or their assignees, reserve the right to photograph, record the image and/or voice of participants for future research, educational, or promotional purposes. By attending, you provide consent to the above items and waive all rights to claims for payment or royalties in connection with any use of said images or recordings, unless you notify event organizers you withhold consent, in writing, prior to the event.



NW 4-H

Judging Event

Super Saturday

Saturday, March 22, 2025, 9:00am - Finish

Host Site: Colby Community College Student Union and Thomas County Fairgrounds. Colby, Kansas

Judging Contests include: 9:00am to 12:30pm -- \$7.00

Crops, Entomology, Horticulture, Life Skills, Photography, Livestock Skill-a-thon

Volunteer Sessions for Parents and Volunteers - Free, 10:00am

Livestock Judging : 12:30pm Thomas County Fairgrounds

Project Opportunities: (NON-LIVESTOCK Judging youth): 1:00 -3:00pm \$5.00

The afternoon will be filled with engineering and technology stations (robots, circuits, building bricks, etc.) and Visual Arts Stations (Scrapbook, clay, paper crafts, etc.)

Sack Lunches provided with mandatory RSVP - \$8.00



Registration Link:

https://kstate.qualtrics.com/jfe/form/SV_dajjdd7SK7HICeW

If you have any questions concerning this event, you may contact Robyn Trussel at 785-798-5020 or rdeines@ksu.edu or

Chandra Plate at 620-388-7157 or cplate@ksu.edu

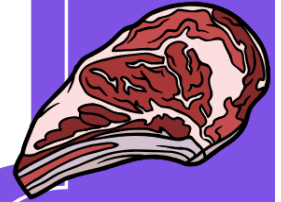
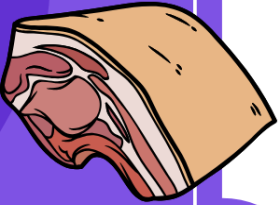
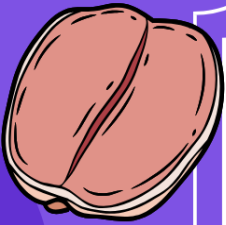


K-State, County Extension Districts and U.S. Department of Agriculture Cooperating.
K-State Research & Extension is an equal opportunity provider and employer



KANSAS STATE UNIVERSITY

INVITATIONAL MEAT JUDGING CONTEST



APRIL 5, 2025

**WEBER HALL
REGISTRATION OPENS AT 7:00AM
CONTEST BEGINS AT 8:00AM**

**REGISTRATION INFO TO COME
QUESTIONS TO ERIN BEYER
ERBEYER@KSU.EDU**



WILLIE AND THE BEANSTALK

Join the K-State Department of Agronomy for the Annual Soybean Competition.

Willie and the Beanstalk is a soybean competition for Kansas K-12 students to encourage interest in the field and increase their knowledge of soybean development. Students who enter the competition will work to see who can grow the largest soybean plant. The contest can prove to be a valuable teaching tool as it allows students to plant their own soybean, then watch it grow and document the progress the plant has made.

Be part of the contest to grow the biggest soybean plant in 47 days!

- Registration for the 2025 contest: **OPENS FEBRUARY 3, 2025.**
 - Please contact beanstalk@ksu.edu with questions about registration.
- [Rules for the 2025 Contest](#)
 - First day to plant/soak seed - Monday, February 24, 2025 Documentation submission deadline - Friday, March 28, 2025
 - [New information on documentation](#)
 - Judging on Saturday, April 12, 2025
 - [Information on remote judging](#)
 - In person judging will be April 12, 2025 from 9 am to noon at the K-State Manhattan Campus Open House, **inside Waters Hall**, (details will be posted later).

For more information and to register— [Willie & the Beanstalk](#)

4-H PLEDGE

I pledge my **HEAD** to clearer thinking,
my **HEART** to greater loyalty,
my **HANDS** to larger service,
and my **HEALTH** to better living,
for my club, my community,
my country, and my world.



Safe Tractor & Machinery Operation Training

This program is a collaboration with K-State Research and Extension Districts: Post Rock, Midway, Cottonwood, CKD, and River Valley.

The National Safe Tractor and Machinery Operation Program (NSTMOP) is designed for 14- and 15-year-olds seeking employment in production agriculture.

Core content areas include:

- Safety basics, Agricultural hazards, Tractors, Connecting and using implements, Materials handling, and more.

Students are certified after successfully passing a 50-question test at the training and doing both an operating skills test and a driving test administered by the employer.

2025 Course Dates, Locations, & Contact Info

April 5th – Ellsworth, KS

Carrico Implement

Craig Dinkel: cadinkel@ksu.edu or 785-472-4442

April 26th – Beloit, KS

Carrico Implement

Blaire Todd: blairet@ksu.edu or 785-738-3597

May 10th – Washington, KS

Bruna Implement Company

Luke Byers: lsbyers@ksu.edu or 785-632-5335

May 22nd – Solomon, KS

KanEquip, Inc.

Justine Johns: jwh04@ksu.edu or 785-392-2147

Scan to register!



SIGN UP: Visit

<https://bit.ly/tractorsafety2025>, scan QR code,
or call an agent listed below!

MANUAL COST: \$15 – Pick up at your local
Extension Office

BRING: Your course manual and enrollment
form. Pay and pick up your course manual at
your local Extension Office. Please pick up
your manual at least 4 days **PRIOR** to the
course.



K-State Research and Extension is committed to providing equal opportunity for participation in all programs, services and activities. Program information may be available in languages other than English. Reasonable accommodations for persons with disabilities, including **alternative** means for communication (e.g., Braille, large print, audio tape, and American Sign Language) may be requested by contacting the event contact **Justine Johns** two weeks prior to the start of the event at **(785-392-2147)**. Requests received after this date will be honored when it is feasible to do so. Language access services, such as interpretation or translation of vital information will be provided free of charge to limited English proficient individuals upon request.

INSECT ART CONTEST

2025



By the Light of the Moon: Insects at Night

The K-State Research and Extension Pesticide Safety and IPM Program is hosting its annual insect-themed art contest, open to all ages and skill levels in Kansas. This year, the theme is *“By the Light of the Moon: Insects at Night.”* The goal is to explore which insects are active or inactive at night and why, then create artwork that fits the contest theme.

AGE GROUPS

- Kindergarten - 2nd Grade
- 3rd Grade - 5th Grade
- 6th Grade - 8th Grade
- High School
- Adults

CATEGORIES

- Traditional Illustration (drawing or painting)
- Digital Artwork
- 3-D Creation (painting on canvas, collage, sculpture, or other media)

AWARDS

Certificates and prizes will be awarded for each art category in each age group for 1st through 3rd place.

HOW TO ENTER



Submit your entry by April 15, 2025. See full rules and details by visiting <https://www.ksre.k-state.edu/pesticides-ipm> or by scanning the QR code.

K-STATE
Research and Extension

Integrated Pest Management
and Pesticide Safety Education

Kansas State University Agricultural Experiment Station and Cooperative Extension Service
K-State Research and Extension is an equal opportunity provider and employer. Issued in furtherance of Cooperative Extension Work, Acts of May 8 and June 30, 1914, as amended. Kansas State University, County Extension Councils, Extension Districts, and United States Department of Agriculture Cooperating, Ernie Minton, Director.

4-H CALENDAR OF EVENTS

February

- 8-9 Phillips County Gun Show Food Stand
- 10 Rooks County 4-H Livestock Committee
- 10 Rooks County 4-H Junior Leaders
- 12 Interior Design & Architecture Project Meeting
- 16-17 Citizenship in Action
- 17 Phillips-Rooks Extension District Offices Closed
- 22-23 Horse Panorama
- 24 Phillips County 4-H Council

March

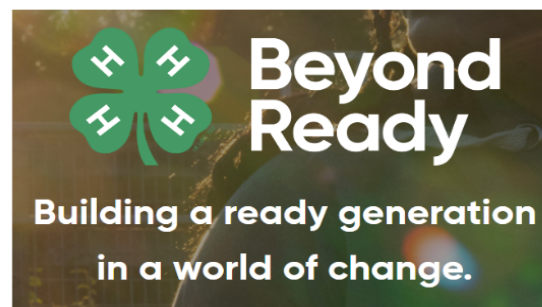
- 1 State 4-H Scholarships and Vanier Family Scholarship Deadline
- 1 K-State Junior Swine Producer Day
- 7 Phillips County 4-H Club Day Registration Deadline
- 10 YQCA - Stockton
- 10 Rooks County 4-H Council
- 12 Interior Design & Architecture Project Meeting
- 14 Rooks County 4-H Club Day Registration Deadline
- 21 State Horse Judging Contest
- 22 K-State Junior Meat Goat Producer Day
- 22 Super Saturday
- 24 Phillips County 4-H Club Day
- 24 Rooks County 4-H Club Day
- 25 Phillips County Progressive Agriculture Safety Day
- 26 Rooks County Progressive Agriculture Safety Day
- 29 Rooks County 4-H/FFA Beef Tagging
- 31 YQCA - Phillipsburg

April

- 5 K-State Invitational Meat Judging Contest
- 6 Rooks County 4-H/FFA Small Animal Tagging
- 14 YQCA - Stockton
- 14 Rooks County 4-H Junior Leaders
- 19-24 National 4-H Conference

May

- 1 Horse Identification Certificate Deadline
- 1 Livestock Possession and Tagging Deadline
- 12 Rooks County 4-H Council



Visit our website:

<https://www.phillipsrooks.k-state.edu/4-h/>



K-State Research and Extension is committed to providing equal opportunity for participation in all programs, services and activities. Program information may be available in languages other than English. Reasonable accommodations for persons with disabilities, including alternative means for communication (e.g., Braille, large print, audio tape, and American Sign Language) may be requested by contacting the event contact, Anna Muir, two weeks prior to the start of the event at 785-425-6851 or amuir@ksu.edu. Requests received after this date will be honored when it is feasible to do so. Language access services, such as interpretation or translation of vital information will be provided free of charge to limited English proficient individuals upon request.