

K-STATE
Research and Extension



Phillips Rooks
District



JANUARY 2025 4-H NEWSLETTER

TEAM:

Anna Muir, Director

Rachael Brooke, Agent

Cody Miller, Agent

Cindy Walker, Agent

Kristin Nash, Office Professional


Jenny Reichard, Office Professional

**4-H MOTTO -
TO MAKE THE BEST
BETTER.**

784 Sixth Street
Phillipsburg, KS 67661
785-543-6845

115 N. Walnut St.
Stockton, KS 67669
785-425-6851

K-State Research and Extension is an equal opportunity provider and employer.



STATE 4-H NEWS

COMMUNICATIONS RESOURCES

As you begin to prepare for County 4-H Club Day remember to check out the great resources for project talks, illustrated talks, demonstrations, and public speaking on the 4-H Communications Project Page—[Communications | Personal Development | Projects | Kansas 4-H Youth Development](#)

CITIZENSHIP IN ACTION

February 16-17 at Hotel Topeka at City Center. Youth 13-18 years old [that want](#) to learn how the state legislative process works and how their voice and participation in decision-making can make a difference in their local communities should plan to attend. The legislative visit will not only familiarize youth with the capitol building, but will also show them how they can affect the legislative process. Register by January 24—[Personal Information - Citizenship In Action \(CIA\)](#)

4-H HORSE PANORAMA

February 22-23 at Rock Springs Ranch. Members can participate in horse quiz bowl, hippology, presentations, and more. A first-timers opportunity will be provided for youth to explore hippology. Virtual contests will be held for photography, logo design, ad layout, poster and PowerPoint. Check it out here—[Horse Panorama | Conferences and Events | Events and Activities | Kansas 4-H Youth Development](#)

STATE 4-H SCHOLARSHIPS and VANIER FAMILY SCHOLARSHIP

Due March 1. The Kansas 4-H Scholarship and Vanier Family Scholarship application process is now open. Scholarships are available to current high school seniors and undergraduate students. There are several scholarships that graduate and professional students are eligible for. For more information about the application process and to apply follow this link [Scholarships | Awards and Recognition | Resources | Kansas 4-H Youth Development](#)

K-STATE JUNIOR PRODUCER DAYS

March 1—K-State Junior Swine Producer Day (flyer is included in the 4-H newsletter)
March 22—K-State Junior Meat Goat Producer Day (flyer is included in the 4-H newsletter)
Register here—<https://commerce.cashnet.com/cashneti/static/storefront/KSUASIND/catalog>

STATE HORSE JUDGING CONTEST

March 21 at the Saline County Expo Center. 4-H members age 9-18 are invited to compete in the State 4-H Horse Judging Contest and the Open Horse Judging Contest. An open novice (non-reasons) division is also available for youth age 7-18 sponsored by the KQHA. Registration is open at the [EquiFest of Kansas website](#) and is due March 7. Complete 4-H division information and rules are available at <https://www.kansas4-h.org/events-activities/contests/horse-judging/index.html>

STATE 4-H NEWS

COOL CAREERS 4-H VIDEO CONTEST

This competition allows 4-H members to learn about a career and then produce a video to create their own episode of the series [Cool Careers](#). 4-H members will select a profession within one of the 4-H projects in which they are enrolled for the current year. 4-H members will film, edit and publish an original video (4-10 minutes in length) about a professional working in this field and their career. These videos should be geared towards a youth 4th-8th grade audience to inspire and introduce them to the exciting opportunities in the selected field of work.

LOCAL 4-H NEWS

UPCOMING MEETINGS

- Phillips County 4-H Council—Committees meet on January 27 at 7:00 p.m. and Council at 7:30 p.m. at the Phillips County Annex Meeting Room
- Rooks County 4-H Livestock Committee—February 10 at 6:30 p.m. at the 4-H Building
- 4-H Junior Leaders—February 10 at 7:30 p.m. at the 4-H Building
- Rooks County 4-H Council — March 10 at 7:30 p.m. at the 4-H Building

SHOOTING SPORTS

Practices will be held from 2:00-4:00 p.m. at the Rooks County Fairgrounds, 4-H Building on the following dates—January 19 and 26, February 2, 9, 16, and 23, and March 2, 9, 16, 23, and 30. Members wanting to participate must be enrolled in 4-H. Enroll here: [Sign In \(4honline.com\)](http://4honline.com)



COAT EXCHANGE

Coats and winter weather apparel are needed.
Phillips County—November thru February at the Phillips County Annex Meeting Room
Rooks County—November thru February at the Rooks County Courthouse First Floor North Hallway



4-H PLEDGE

I pledge my **HEAD** to clearer thinking,
my **HEART** to greater loyalty,
my **HANDS** to larger service,
and my **HEALTH** to better living,
for my club, my community,
my country, and my world.



LOCAL 4-H NEWS

PHILLIPS COUNTY 4-H EVENT SCHOLARSHIPS

The Phillips County 4-H Council will provide scholarships to members attending events. \$200 for state events and \$300 for national events. The scholarship application can be found here: <https://wakelet.com/wake/74cEuoNhURuinlF84b0dF>

PHILLIPS COUNTY 4-H EVENT SCHOLARSHIP JAKE & LUCILLE JONES

Through the Phillips County Community Foundation a 4-H event scholarship is available to 4-Hers that are wanting to attend Rock Springs Ranch. The scholarship will pay \$315 towards camp registration fees and will be paid directly to Rock Springs Ranch prior to the 4-Her attending camp. The scholarship application can be found here: <https://wakelet.com/wake/74cEuoNhURuinlF84b0dF>

PHILLIPS COUNTY FAIR PREMIUM REQUIREMENTS

The Phillips County Fair Board implements the following in order for members to receive money for exhibiting at the Phillips County Fair as well as selling an animal in the Phillips County 4-H/FFA Livestock Premium Sale.

- 1) Members must attend three 4-H Club meetings from roll call to adjournment.
- 2) Members must work in the Fair Food Stand.
- 3) Members must also meet one of the following requirements:
 - attend 4-H Sunday,
 - participate in the county sponsored fundraiser,
 - participate in County 4-H Club Day,
 - and/or participate in a 4-H leadership activity such as a camp counselor, daycamp, babysitting clinic, etc.

YOUTH FOR THE QUALITY CARE OF ANIMALS (YQCA)

Required for youth planning to sell livestock in the Rooks County Free Fair 4-H/FFA Livestock Sale, livestock exhibitors at the Kansas State Fair and Kansas Junior Livestock Show. Trainings will be available on March 10 at 6:00 p.m. at the Rooks County Fairgrounds, 4-H Building, March 31 at 5:30 pm. at the Phillips County Annex Meeting Room, and April 14 at the Rooks County Fairgrounds, 4-H Building. All livestock must be tagged and turned into the Phillips-Rooks Extension District by May 1 to be eligible for the Phillips County Fair and Rooks County Free Fair.



NEW DATE!

NW KS 4-H AG AMBASSADORS
PRESENT THE

AG & STEM YOUTH DAY CAMP

SATURDAY, JANUARY 18TH, 2025

1 - 4:30 PM

KSU Agricultural Research Center
1232 240th Ave.
HAYS, KS 67601

- RECOMMENDED FOR AGES 7-13
- OPEN TO ANY YOUTH!
- FUN GROUP ACTIVITIES
- HANDS-ON, AMBASSADOR-LED STATIONS INCLUDE:
 - LIVESTOCK DIGESTIVE SYSTEMS
 - FOOD SAFETY 101
 - GERMINATION STATION
 - FARM SAFETY
 - TASTY MILK SCIENCE
- SNACK SERVED!



\$15/YOUTH

Pay at the door.

Register by Jan. 16th!

Scan me to register,
or visit:
https://kstate.qualtrics.com/jfe/form/SV_3dAlusZyCt7qFCu



For questions, contact:
Twin Creeks Extension District-Graham County
785.421.3411 or jenileem@ksu.edu

K-STATE
Research and Extension

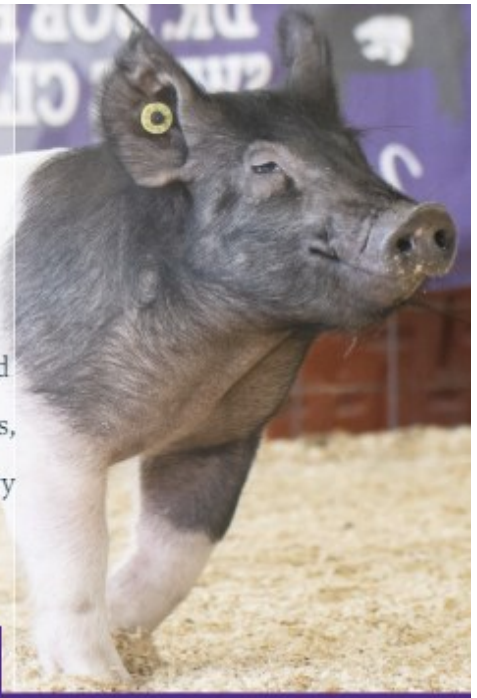


DANE G. HANSEN
FOUNDATION

K-State Research and Extension is committed to providing equal opportunity for participation in all programs, services and activities. Program information may be available in languages other than English. Reasonable accommodations for persons with disabilities, including alternative means for communication (e.g., Braille, large print, audio tape, and American Sign Language) may be requested by contacting Jenilee Godsey two weeks prior to the start of the event, January 4, 2025 at jenileem@ksu.edu or 785-421-3411. Requests received after this date will be honored when it is feasible to do so. Language access services, such as interpretation or translation of vital information will be provided free of charge to limited English proficient individuals upon request.



2025 K-State Junior Swine Producer Day



Join us on Saturday, March 1, 2025 for the biennial K-State Junior Swine Producer Day at the Stanley Stout Center in Manhattan. This educational event will be a fun-filled day in which youth, parents, agents, ag teachers, and swine project leaders can increase their knowledge of youth swine projects. Presentations will be provided by K-State faculty members, graduate students, former exhibitors, and guest speakers. All ages and skill levels are invited! Participants will receive a K-State Show Pig Guide, t-shirt, and complimentary lunch. Only those who register by February 5 will receive a t-shirt. The registration fee is \$20/person for those who sign up by the registration deadline, or \$25/person after that date. Registration is limited to 400 attendees, on a first come, first served basis. This is a family event! Anyone attending must register, including all youth and adults.

March 1



Tentative Schedule

- 8:00AM Registration Opens
- 9:00AM Welcome
- 9:15AM Project Selection
- 10:00AM Breakout Sessions
 - Nutrition, Meats, Facilities & Equipment, Breeds & Ear Notching
- 12:00PM Lunch
- 12:45PM Health
- 1:30PM Breakout Sessions
 - Showmanship, Daily Care & Clipping, Show Day Prep, Resources
- 3:00PM Wrap-up
- 3:30PM YQCA Training (optional)



Registration

- ✔ \$20/person by February 5
- ✔ \$25/person after February 5
- ✔ Late registrants will not receive a t-shirt.
- ✔ All attendees must register, including youth, parents, and adults.
- ✔ No refunds.
- ✔ Attendance is limited to the first 400 participants to register.



Questions?

Joel DeRouchey
 jderouch@ksu.edu
 785.532.2280

Lexie Hayes
 adhaves@ksu.edu
 785.532.1264

Register By February 5

Limited Attendance

Location
 Stanley Stout Center

Register Online
<https://commerce.cashnet.com/KSUASIND>



Scan Me!

K-State, County Extension Councils, Extension Districts, and U.S. Department of Agriculture Cooperating. All educational programs and materials available without discrimination on the basis of race, color, religion, national origin, sex, age, or disability.

K-State Research and Extension and the Department of Animal Sciences & Industry, or their assignees, reserve the right to photograph, record the image and/or voice of participants for future research, educational, or promotional purposes. By attending, you provide consent to the above items and waive all rights to claims for payment or royalties in connection with any use of said images or recordings, unless you notify event organizers you withhold consent, in writing, prior to the event.

K-State Junior MEAT GOAT PRODUCER DAY

3.22.25

Event

Join us on Saturday, March 22, 2025 for the biennial K-State Junior Meat Goat Producer Day at the Stanley Stout Center north of the K-State campus in Manhattan. This educational program will be a fun-filled day in which youth, parents, agents, ag teachers, project leaders, and volunteers can increase their knowledge of youth meat goat projects. Presentations will be provided by K-State faculty members, graduate students, former exhibitors, and guest speakers. All ages and skill levels are invited! Participants will receive a K-State Meat Goat Show Guide, t-shirt, and complimentary lunch. Only those who register by the deadline on February 26 will receive a t-shirt. The registration fee is \$20/person before February 26 and \$25/person after the deadline. This is a family event! Anyone attending must register, including all youth, parents, and adults. Registration is limited to 400 participants, filled on a first come, first serve basis.

K-State, County Extension Councils, Extension Districts, and U.S. Department of Agriculture Cooperating. All educational programs and materials available without discrimination on the basis of race, color, religion, national origin, sex, age, or disability.

Tentative Program

Friday, March 21

5:00-7:00PM *Optional Tour*
Sheep & Meat Goat Center

Saturday, March 22

8:00AM Check-in

9:00AM Welcome

9:15AM Selection

10:00AM Breakout Sessions

-Nutrition

-Facilities & Equipment

-Doe Management &

Kidding

11:15AM Health & Wellness

12:00PM Lunch

1:00PM Breakout Sessions

-Showmanship

-Reproduction

-Clipping & Grooming

3:15PM Wrap-up

3:30PM YQCA Training (*optional*)

4:00-6:00PM *Optional Tour*

Sheep & Meat Goat Center

Registration

- 📌 \$20/person by February 26
- 📌 \$25/person after February 26
- 📌 Late registrants will not receive a t-shirt.
- 📌 All attendees must register, including youth, parents, & adults.
- 📌 No refunds
- 📌 Attendance is limited to the first 400 participants to register.



Scan me!

Questions?

Lexie Hayes
adhayes@ksu.edu
785.532.1264

Register Online

[https://commerce.cashnet.com /
KSUASIND](https://commerce.cashnet.com/KSUASIND)

By
February 26

K-State Research and Extension and the Department of Animal Sciences & Industry, or their assignees, reserve the right to photograph, record the image and/or voice of participants for future research, educational, or promotional purposes. By attending, you provide consent to the above items and waive all rights to claims for payment or royalties in connection with any use of said images or recordings, unless you notify event organizers you withhold consent, in writing, prior to the event.

4-H CALENDAR OF EVENTS

January

- 18 Ag & STEM Youth Day Camp
- 18-19 Dog Judges Training
- 27 Phillips County 4-H Council Committees
- 27 Phillips County 4-H Council

February

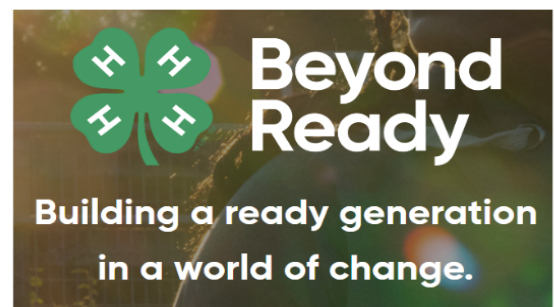
- 10 Rooks County 4-H Livestock Committee
- 10 Rooks County 4-H Junior Leaders
- 16-17 Citizenship in Action
- 22-23 Horse Panorama

March

- 1 State 4-H Scholarships and Vanier Family Scholarship Deadline
- 1 K-State Junior Swine Producer Day
- 10 YQCA - Stockton
- 10 Rooks County 4-H Council
- 21 State Horse Judging Contest
- 22 K-State Junior Meat Goat Producer Day
- 22 Super Saturday
- 24 Phillips County 4-H Club Day
- 24 Rooks County 4-H Club Day
- 25 Phillips County Progressive Agriculture Safety Day
- 26 Rooks County Progressive Agriculture Safety Day
- 29 Rooks County 4-H/FFA Beef Tagging
- 31 YQCA - Phillipsburg

April

- 6 Rooks County 4-H/FFA Small Animal Tagging
- 14 YQCA - Stockton
- 14 Rooks County 4-H Junior Leaders
- 19-24 National 4-H Conference



Visit our website:

<https://www.phillipsrooks.k-state.edu/4-h/>



K-State Research and Extension is committed to providing equal opportunity for participation in all programs, services and activities. Program information may be available in languages other than English. Reasonable accommodations for persons with disabilities, including alternative means for communication (e.g., Braille, large print, audio tape, and American Sign Language) may be requested by contacting the event contact, Anna Muir, two weeks prior to the start of the event at 785-425-6851 or amuir@ksu.edu. Requests received after this date will be honored when it is feasible to do so. Language access services, such as interpretation or translation of vital information will be provided free of charge to limited English proficient individuals upon request.