

K-STATE
Research and Extension



Phillips Rooks
District



NOVEMBER 2024 4-H NEWSLETTER

TEAM:

Anna Muir, Director

Rachael Brooke, Agent

Cody Miller, Agent

Cindy Walker, Agent

Kristin Nash, Office Professional

Jenny Reichard, Office Professional

**4-H MOTTO -
TO MAKE THE BEST
BETTER.**

784 Sixth Street
Phillipsburg, KS 67661
785-543-6845

115 N. Walnut St.
Stockton, KS 67669
785-425-6851

K-State Research and Extension is an equal opportunity provider and employer.

STATE 4-H NEWS

4-H T-SHIRTS

The t-shirts sold at the 2024 Kansas State Fair “4-H Grown” will be available through an online order system. Orders are due December 1 with shirts to be delivered in mid to late December. Order here— <https://www.companycasuals.com/4-HGROWN/start.jsp>



K-STATE JUNIOR PRODUCER DAYS

March 1—K-State Junior Swine Producer Day (flyer is included in the 4-H newsletter)

March 22—K-State Junior Meat Goat Producer Day (flyer is included in the 4-H newsletter)

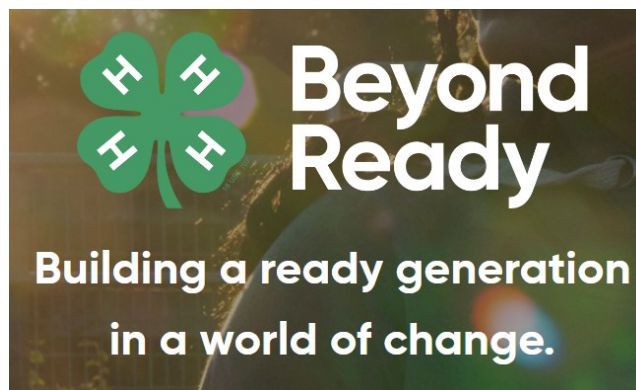
Register here—<https://commerce.cashnet.com/cashneti/static/storefront/KSUASIND/catalog>


HORSE IDENTIFICATION CERTIFICATE

An updated version is now available. Please discard previous certificates and use the new form. It is available here—https://bookstore.ksre.ksu.edu/item/horse-identification-certificate_P1039 The Horse Identification Certificate is due May 1.

2025 EXCHANGE OPPORTUNITIES

Kansas 4-H has committed to host 4-H exchanges in the summer of 2025 for 3-4 weeks. We will be hosting youth from Japan, Norway, and Costa Rico. Families who host a youth are expected to host a sibling of the same gender and within 2 years of the visitor’s age. Applications and information can be found here—<https://www.states4hexchange.org/apply/host/>





LOCAL 4-H NEWS

UPCOMING MEETINGS

Phillips County 4-H Council—November 25 at 6:30 p.m. at Phillips County Fair Building
Phillips County 4-H Officers and Club Leader Training
Rooks County 4-H Council — November 11 at 7:30 p.m. at the 4-H Building (Election of Officers)
Rooks County 4-H Livestock Committee—December 9 at 6:30 p.m. at the 4-H Building
4-H Junior Leaders—December 9 at 7:30 p.m. at the 4-H Building

4-H ENROLLMENT

Thank you for your patience during the 4-H enrollment process. We ask that you please check to make sure that you are enrolled in all of the project areas you intend to participate in during the 4-H year. All new and returning 4-H members, 4-H Cloverbuds and 4-H volunteers must enroll annually in 4-H. Enroll here: [Sign In \(4honline.com\)](http://4honline.com) Please make sure all contact information including email addresses are accurate as this will be the information used to get important 4-H information to all members including the monthly 4-H newsletter. Don't forget to enroll in the Leadership project if you are a 4-H member and age 12 or older by January 1.

SHOOTING SPORTS

Practices will be held from 2:00-4:00 p.m. at the Rooks County Fairgrounds, 4-H Building on the following dates—
November 3, 10, and 24
December 1, 8, 15, and 22
Members wanting to participate must be enrolled in 4-H. Enroll here: [Sign In \(4honline.com\)](http://4honline.com)

4-H ACHIEVEMENT BANQUET

Phillips County—November 9 at 5:30 p.m. at the Phillips County Fair Building. A meal will be provided. Deer Creek—set up tables, chairs and cover tables. Iowa Union—decorations. Each club provide 2 members to greet guests at the door and seat them with appropriate club.
Rooks County—November 16 at 6:00 p.m. at the 4-H Building. A meal will be provided. If you completed your 4-H Record Book, a 4-H Achievement Award, and/or a 4-H Project Report Form you will be receiving an award. Don't forget to RSVP to the Phillips-Rooks Extension District.

4-H OFFICERS & CLUB LEADERS TRAINING

Phillips County—November 25 at 6:30 p.m. at the Phillips County Fair Building. Club leaders training to follow officers training.

STOCKTON PUBLIC LIBRARY PARADE OF TREES

Get your 4-H Club involved—put up and decorate a tree! You may follow the Olde Time Christmas Theme “Old Time Christmas on Gingerbread Lane” or choose whatever theme you wish for your tree. You may also borrow a tree from the library if you don't have one, first come first serve basis. Trees may be put up anytime between October 23 and November 17 during regular library hours. Please contact the Stockton Public Library at 785-425-6372 if you plan to participate.

LOCAL 4-H NEWS



COAT EXCHANGE

Coats and winter weather apparel are needed.
Phillips County—November thru January at the Phillips County Annex Meeting Room
Rooks County—November thru January at the Rooks County Courthouse First Floor North Hallway



GOALS FOR THE NEW 4-H YEAR

Now is the time to set your project goals for the year. Think about what it is that you want to do and learn through your 4-H activities. You can use the resource https://bookstore.ksre.ksu.edu/download/setting-4-h-project-goals_4H1100 to assist you. Now is also the time for the 4-H Club to set some goals for the year. Some examples of club goals are: members present a project talk or demonstration at County Club Day, hold a club project tour, and complete a community service project.

CLUB LEADER & PROJECT LEADER RESOURCES

Thank you for volunteering your time and talents to be a leader. Here are some resources available to assist you <https://www.kansas4-h.org/resources/leader-resources/clubcorner/index.html> and <https://www.kansas4-h.org/resources/leader-resources/clubcorner/officer-resources/index.html>. Project leaders may find these resources helpful <https://www.kansas4-h.org/resources/leader-resources/cloverclassroom/index.html>

ONLINE RECORD KEEPING — ZBOOKS

ZBooks is the online 4-H record keeping software. This online software is identical to the pdf forms used for many years—meaning 4-H'ers and families now have the option to choose which format you feel more comfortable using. Both are evaluated using the same rubric and set of standards. Some features of ZBooks include: mobile friendly, internet-based, unlimited amount of entries until final report is submitted, permanent record is included, and the live online support chat feature. ZBooks resources can be found here: <https://www.kansas4-h.org/resources/awards-and-recognition/ZBooks.html>

CLUB FUNDRAISERS

Must be approved by the Phillips-Rooks Extension District Board. The Board meets on the first Tuesday of every month. The 4-H Club should complete the 4-H Funds Soliciting Worksheet. It can be found here: Phillips County 4-H Wakelet <https://wakelet.com/wake/74cEuoNhURuinlF84b0dF> and Rooks County 4-H Wakelet <https://wakelet.com/wake/wqrWq8kT0bF-e87sEbczQ>. The form should be delivered to the Phillip-Rooks Extension District Office.

PHILLIPS COUNTY 4-H EVENT SCHOLARSHIPS

The Phillips County 4-H Council will provide scholarships to members attending events. \$200 for state events and \$300 for national events. The scholarship application can be found here: <https://wakelet.com/wake/74cEuoNhURuinlF84b0dF>

LOCAL 4-H NEWS

PHILLIPS COUNTY 4-H EVENT SCHOLARSHIP JAKE & LUCILLE JONES

Through the Phillips County Community Foundation a 4-H event scholarship is available to 4-Hers that are wanting to attend Rock Springs Ranch. The scholarship will pay \$315 towards camp registration fees and will be paid directly to Rock Springs Ranch prior to the 4-Her attending camp. The scholarship application can be found here: <https://wakelet.com/wake/74cEuoNhURuinlF84b0dF>

PHILLIPS COUNTY FAIR PREMIUM REQUIREMENTS

The Phillips County Fair Board implements the following in order for members to receive money for exhibiting at the Phillips County Fair as well as selling an animal in the Phillips County 4-H/FFA Livestock Premium Sale.

- 1) Members must attend three 4-H Club meetings from roll call to adjournment.
- 2) Members must work in the Fair Food Stand.
- 3) Members must also meet one of the following requirements:
 - attend 4-H Sunday,
 - participate in the county sponsored fundraiser,
 - participate in County 4-H Club Day,
 - and/or participate in a 4-H leadership activity such as a camp counselor, daycamp, babysitting clinic, etc.

PHILLIPS COUNTY 4-H COUNCIL OFFICER TEAM

President—Kalinda Meili, Vice President—William Jessup, Secretary—Kalee Ragsdale, Treasurer—Addie Ellenberger, Reporter—Aden Shaw and Advisors—Jacque Bretton, Bethany Jessup and Kimberly Meili

CONGRATULATIONS

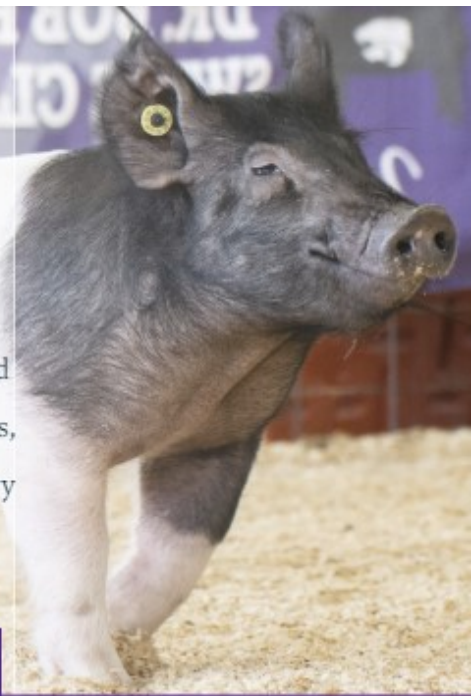
To everyone that exhibited at the Kansas Junior Livestock Show!



4-H is for YOU!
4-H is for FUN!



2025 K-State Junior Swine Producer Day



Join us on Saturday, March 1, 2025 for the biennial K-State Junior Swine Producer Day at the Stanley Stout Center in Manhattan. This educational event will be a fun-filled day in which youth, parents, agents, ag teachers, and swine project leaders can increase their knowledge of youth swine projects. Presentations will be provided by K-State faculty members, graduate students, former exhibitors, and guest speakers. All ages and skill levels are invited! Participants will receive a K-State Show Pig Guide, t-shirt, and complimentary lunch. Only those who register by February 5 will receive a t-shirt. The registration fee is \$20/person for those who sign up by the registration deadline, or \$25/person after that date. Registration is limited to 400 attendees, on a first come, first served basis. This is a family event! Anyone attending must register, including all youth and adults.

March 1



Tentative Schedule

- 8:00AM Registration Opens
- 9:00AM Welcome
- 9:15AM Project Selection
- 10:00AM Breakout Sessions
 - Nutrition, Meats, Facilities & Equipment, Breeds & Ear Notching
- 12:00PM Lunch
- 12:45PM Health
- 1:30PM Breakout Sessions
 - Showmanship, Daily Care & Clipping, Show Day Prep, Resources
- 3:00PM Wrap-up
- 3:30PM YQCA Training (optional)



Registration

- ✔ \$20/person by February 5
- ✔ \$25/person after February 5
- ✔ Late registrants will not receive a t-shirt.
- ✔ All attendees must register, including youth, parents, and adults.
- ✔ No refunds.
- ✔ Attendance is limited to the first 400 participants to register.



Questions?

Joel DeRouchey
jderouch@ksu.edu
785.532.2280

Lexie Hayes
adhayes@ksu.edu
785.532.1264

Register By February 5

Limited Attendance

Location
Stanley Stout Center

Register Online
<https://commerce.cashnet.com/KSUASIND>



Scan Me!

K-State, County Extension Councils, Extension Districts, and U.S. Department of Agriculture Cooperating. All educational programs and materials available without discrimination on the basis of race, color, religion, national origin, sex, age, or disability.

K-State Research and Extension and the Department of Animal Sciences & Industry, or their assignees, reserve the right to photograph, record the image and/or voice of participants for future research, educational, or promotional purposes. By attending, you provide consent to the above items and waive all rights to claims for payment or royalties in connection with any use of said images or recordings, unless you notify event organizers you withhold consent, in writing, prior to the event.

K-State Junior MEAT GOAT PRODUCER DAY

3.22.25

Event

Join us on Saturday, March 22, 2025 for the biennial K-State Junior Meat Goat Producer Day at the Stanley Stout Center north of the K-State campus in Manhattan. This educational program will be a fun-filled day in which youth, parents, agents, ag teachers, project leaders, and volunteers can increase their knowledge of youth meat goat projects. Presentations will be provided by K-State faculty members, graduate students, former exhibitors, and guest speakers. All ages and skill levels are invited! Participants will receive a K-State Meat Goat Show Guide, t-shirt, and complimentary lunch. Only those who register by the deadline on February 26 will receive a t-shirt. The registration fee is \$20/person before February 26 and \$25/person after the deadline. This is a family event! Anyone attending must register, including all youth, parents, and adults. Registration is limited to 400 participants, filled on a first come, first serve basis.

K-State, County Extension Councils, Extension Districts, and U.S. Department of Agriculture Cooperating. All educational programs and materials available without discrimination on the basis of race, color, religion, national origin, sex, age, or disability.

Tentative Program

Friday, March 21

5:00-7:00PM *Optional Tour*
Sheep & Meat Goat Center

Saturday, March 22

8:00AM Check-in

9:00AM Welcome

9:15AM Selection

10:00AM Breakout Sessions

-Nutrition

-Facilities & Equipment

-Doe Management &

Kidding

11:15AM Health & Wellness

12:00PM Lunch

1:00PM Breakout Sessions

-Showmanship

-Reproduction

-Clipping & Grooming

3:15PM Wrap-up

3:30PM YQCA Training (*optional*)

4:00-6:00PM *Optional Tour*

Sheep & Meat Goat Center

Registration

- 📌 \$20/person by February 26
- 📌 \$25/person after February 26
- 📌 Late registrants will not receive a t-shirt.
- 📌 All attendees must register, including youth, parents, & adults.
- 📌 No refunds
- 📌 Attendance is limited to the first 400 participants to register.



Scan me!

Questions?

Lexie Hayes
adhayes@ksu.edu
785.532.1264

Register Online

[https://commerce.cashnet.com /
KSUASIND](https://commerce.cashnet.com/KSUASIND)

By
February 26

K-State Research and Extension and the Department of Animal Sciences & Industry, or their assignees, reserve the right to photograph, record the image and/or voice of participants for future research, educational, or promotional purposes. By attending, you provide consent to the above items and waive all rights to claims for payment or royalties in connection with any use of said images or recordings, unless you notify event organizers you withhold consent, in writing, prior to the event.

4-H CALENDAR OF EVENTS

November

- 9 Phillips County 4-H Achievement Banquet
- 9-10 Shooting Sports Update Training
- 11 Phillips-Rooks Extension District Closed
- 11 Rooks County 4-H Council
- 16 Rooks County 4-H Achievement Night
- 23-24 Kansas Youth Leadership Forum
- 23-24 Kansas Volunteer Forum
- 25 Phillips County 4-H Officers Training
- 27 Phillips-Rooks Extension District Closed in afternoon
- 28 Phillips-Rooks Extension District Closed
- 29 Phillips-Rooks Extension District Closed
- 29-December 3 National 4-H Congress

December

- 23-31 Phillips-Rooks Extension District Closed

January

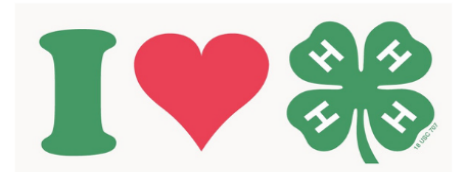
- 1-2 Phillips-Rooks Extension District Closed
- 25 Dog Judges Training

February

- 16-17 Citizenship in Action
- 22-23 Horse Panorama

March

- 1 K-State Junior Swine Producer Day
- 22 K-State Junior Meat Goat Producer Day
- 22 Super Saturday
- 25 Phillips County Progressive Agriculture Safety Day
- 26 Rooks County Progressive Agriculture Safety Day



Visit our website:

<https://www.phillipsrooks.k-state.edu/4-h/>



K-State Research and Extension is committed to providing equal opportunity for participation in all programs, services and activities. Program information may be available in languages other than English. Reasonable accommodations for persons with disabilities, including alternative means for communication (e.g., Braille, large print, audio tape, and American Sign Language) may be requested by contacting the event contact, Anna Muir, two weeks prior to the start of the event at 785-425-6851 or amuir@ksu.edu. Requests received after this date will be honored when it is feasible to do so. Language access services, such as interpretation or translation of vital information will be provided free of charge to limited English proficient individuals upon request.